

The 34 ISRD Member Districts

Baker	Jackson
Bradford	Jefferson
Calhoun	Lafayette
Columbia	Levy
DeSoto	Liberty
Dixie	Madison
Flagler	Monroe
Franklin	Nassau
Gadsden	Okeechobee
Gilchrist	Putnam
Glades	Sumter
Gulf	Suwannee
Hamilton	Taylor
Hardee	Union
Hendry	Wakulla
Highlands	Walton
Holmes	Washington

Contact ISRD

Dr. Renée Speisman, Project Director
speismrf@gm.sbac.edu

Institute for Small and Rural Districts
Ft. Clarke Middle School
9301 NW 23rd Avenue
Gainesville, FL 32606

Phone: 352/333-2831
Fax: 352/333-2832

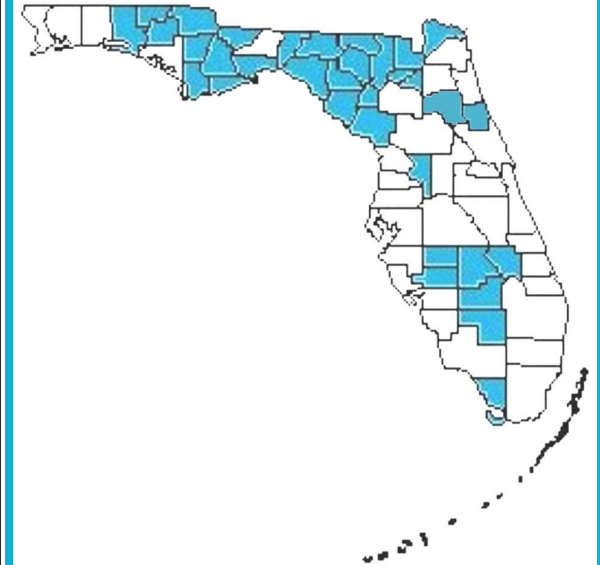
Web Page: www.nefec.org/isrd

The Institute for Small and Rural Districts is funded by the State of Florida, Department of Education, Bureau of Exceptional Student Education and Student Services (BEESS) through federal assistance under the Individuals with Disabilities Act (IDEA), Part B. ISRD operates through the North East Florida Educational Consortium.



312321
Florida Department of Education
Dr. Eric J. Smith, Commissioner

Institute for Small and Rural Districts



About ISRD

The ISRD project provides training and technical assistance designed to support positive outcomes for students with disabilities and their families across a network of thirty four (34) small and rural Florida school districts. The project assists district level administrators and school-based administrators as they implement the Individuals with Disabilities Education Act (IDEA) regulations and the Florida State Performance Plan (SPP).

Working in collaboration with the Florida Department of Education, Bureau of Exceptional Education and Student Services (BEESS), the goal of the ISRD project is that overall services to students with disabilities and those at risk will be enhanced and that increased student performance will be the end result of project activities.



ISRD Services

Professional Development

- Statewide Training
- Regional Training
- District Training
- Professional Learning Communities

Information Dissemination

- Items of Interest Notebooks
- ISRD Website
- Job Specific Web Pages
- ISRD Document Bank
- RtI Information Exchange
- Spotlight on District Initiatives
- Lending Library

Technical Assistance

- On-site Technical Assistance
- Telephone Support
- Email Networking Support
- Printed Material Distribution
- Mentors for New ESE Administrators
- Small District Coalition Work Groups

Topics Addressed

- Individuals with Disabilities Education Act (IDEA)
- Florida State Performance Plan Indicators
 - 1 - Graduation Rate
 - 2 - Dropout Rate
 - 3 - Performance on Statewide Assessments
 - 4 - Suspension/Expulsion
 - 5 - Least Restrictive Environment
- 13 - Secondary Transition
- 14 - Postsecondary Outcomes
- Compliance/Monitoring
- Response to Intervention
- Next Generation Strategic Plan
- Curriculum and Instruction
- Autism
- Legal Issues

Target Audience

- ESE Administrators
- Principals/Assistant Principals
- District Administrators
- ESE Specialists
- Psychologists
- School Personnel